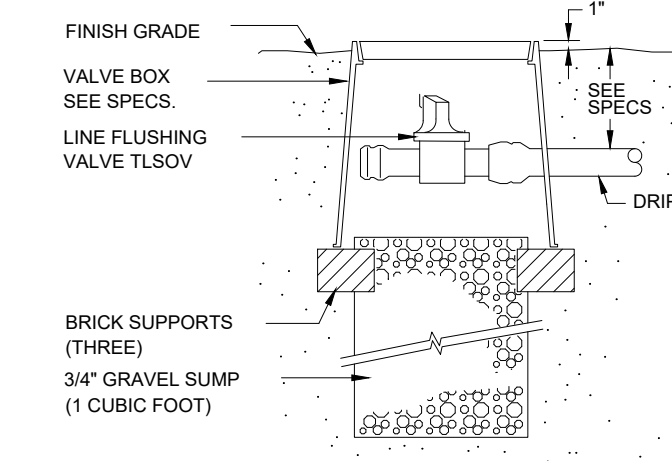


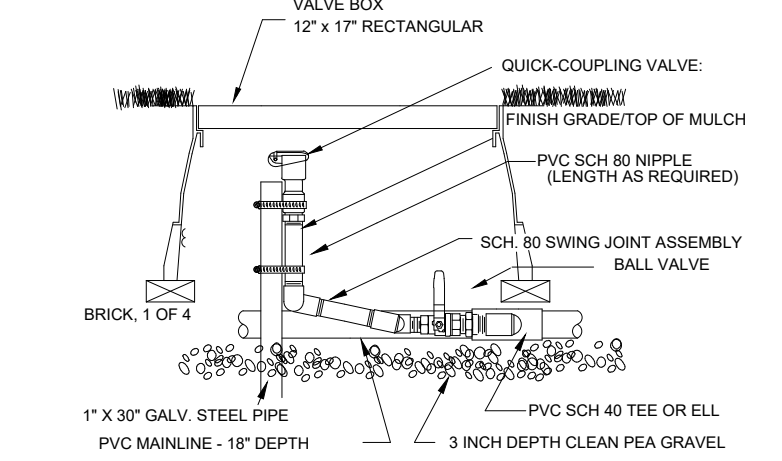
CONTROL ZONE KIT

N.T.S.



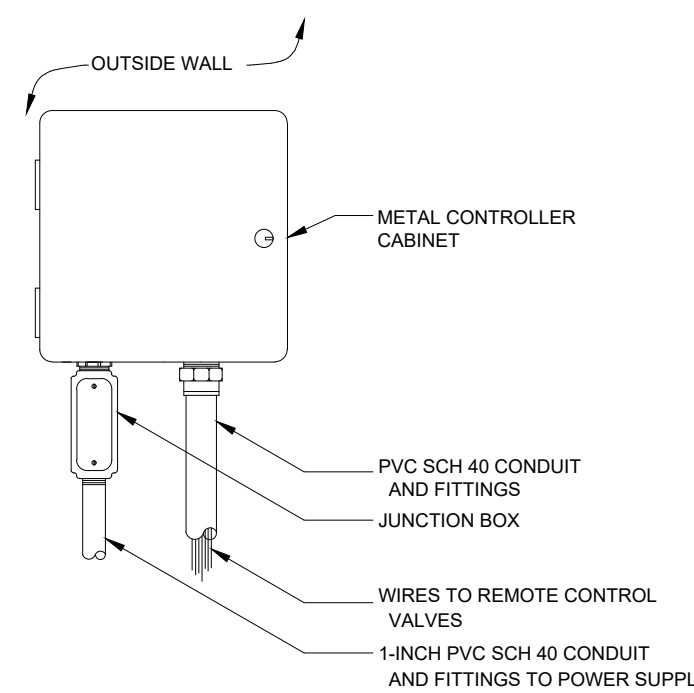
MANUAL LINE FLUSH VALVE

N.T.S.



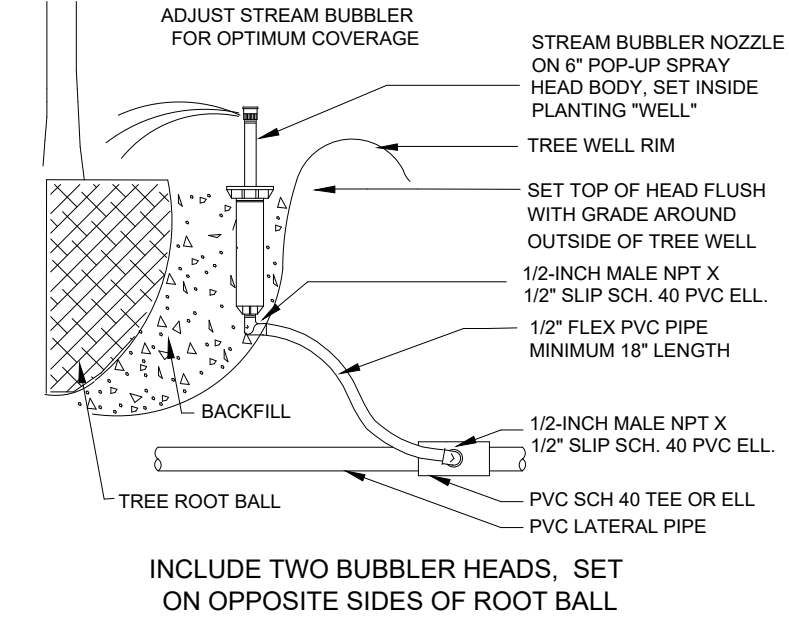
QUICK COUPLER VALVE WITH PVC BALL VALVE

N.T.S.



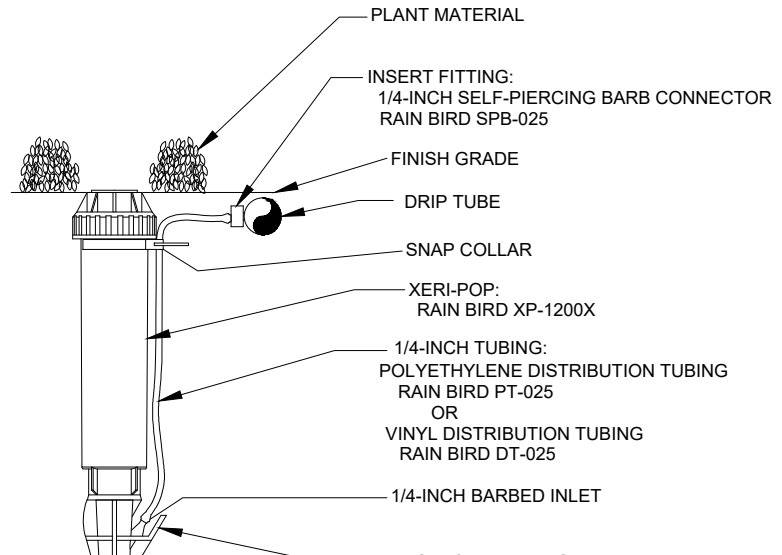
WALL MOUNT CONTROLLER

N.T.S.



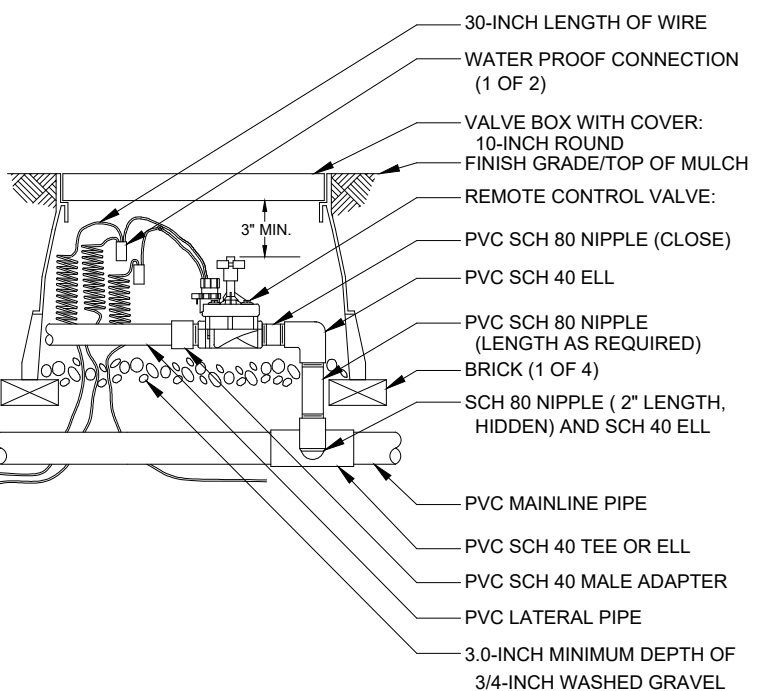
TREE BUBBLER

N.T.S.



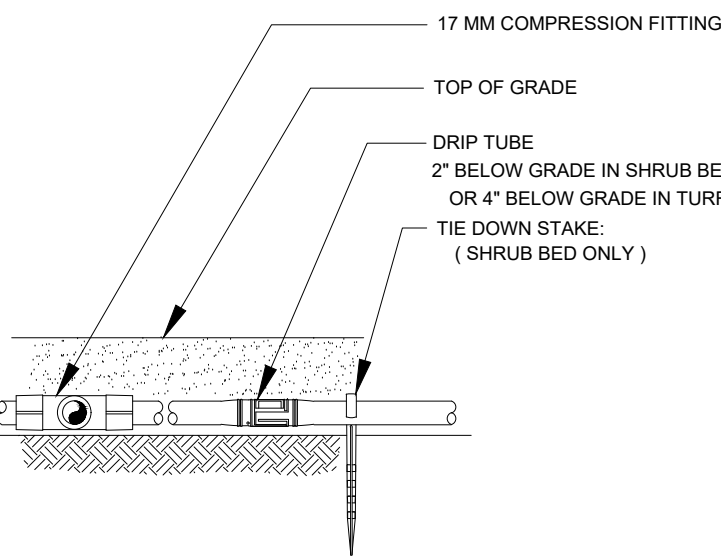
DRIP ZONE INDICATOR

N.T.S.



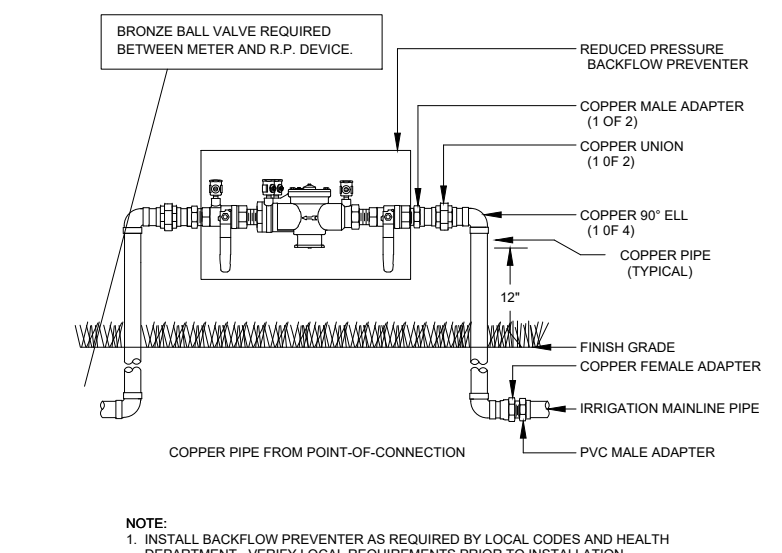
REMOTE CONTROL VALVE

N.T.S.



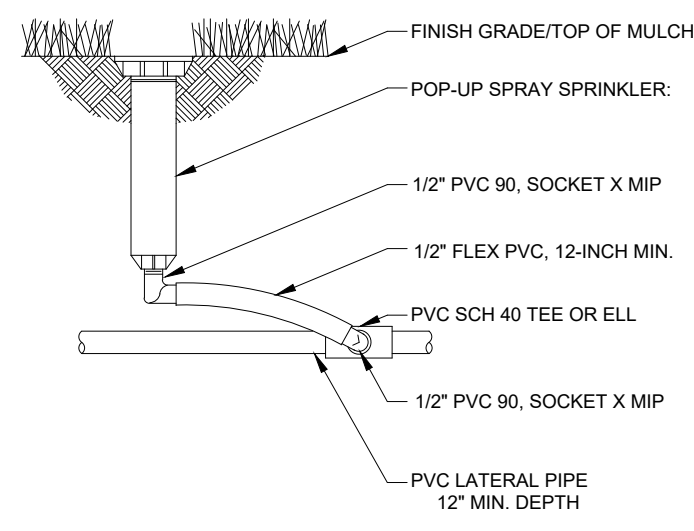
DRIP TUBE

N.T.S.



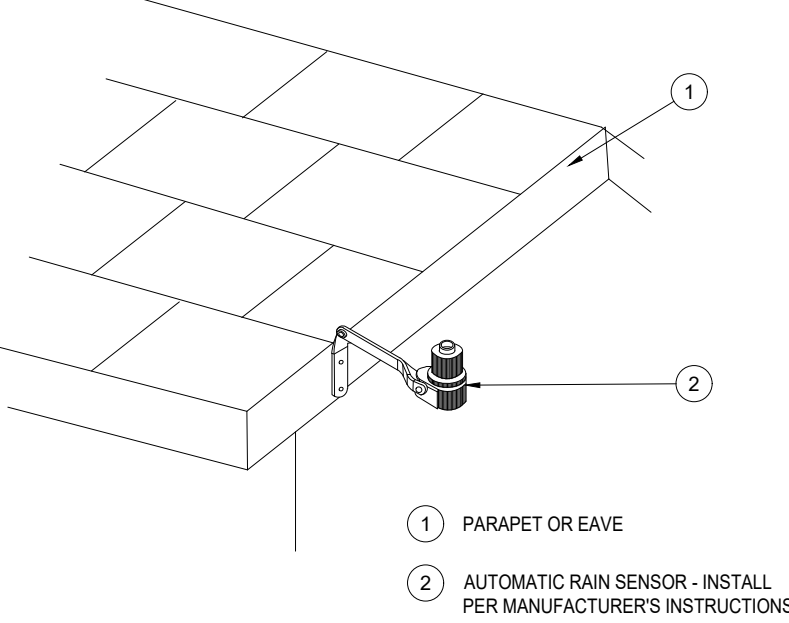
RP DEVICE

N.T.S.



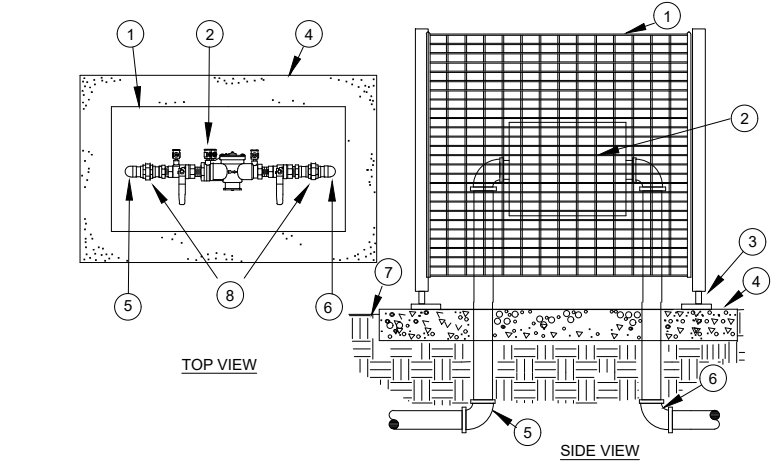
POP-UP SPRAY HEAD

N.T.S.



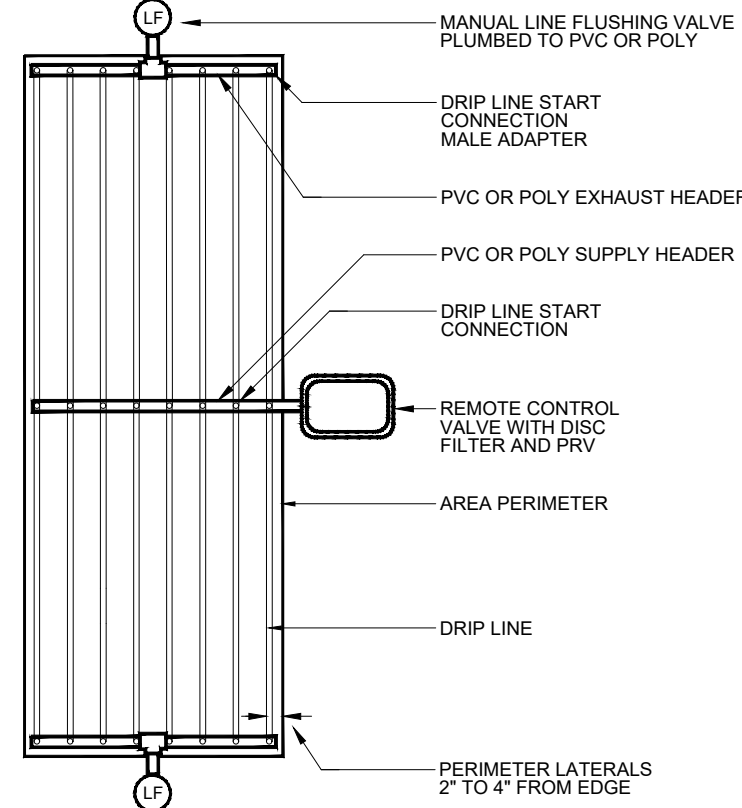
RAIN SENSOR, ROOF MOUNT

N.T.S.



RP DEVICE WITH ENCLOSURE

N.T.S.

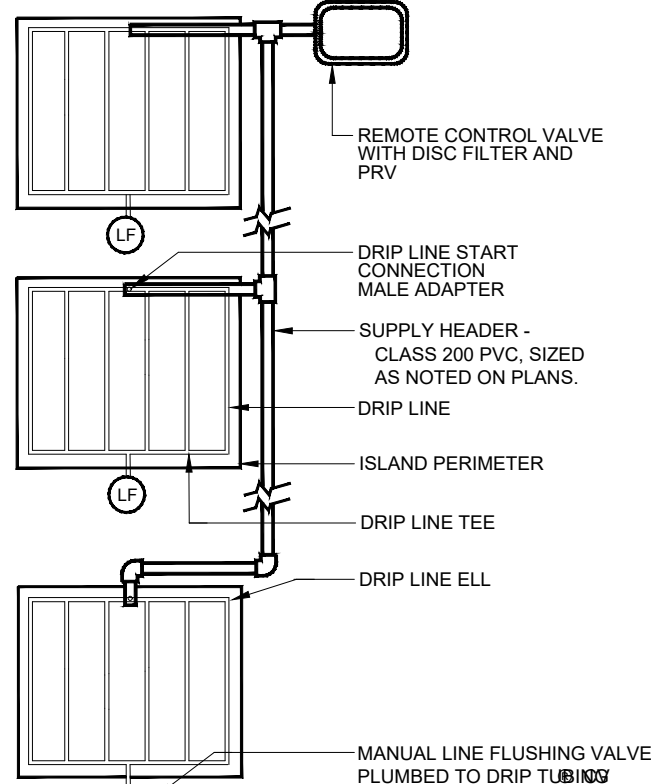


SUPPLY AND EXHAUST HEADERS SHALL BE CLASS 200 PVC PIPE, OF THE SAME DIAMETER AS THE ZONE VALVE SIZE.

USE DRIP TUBE FOR SUPPLY AND EXHAUST HEADERS ON GRIDS WITH FLOW SMALLER THAN 5 GPM ONLY.

DRIP CENTER FEED LAYOUT

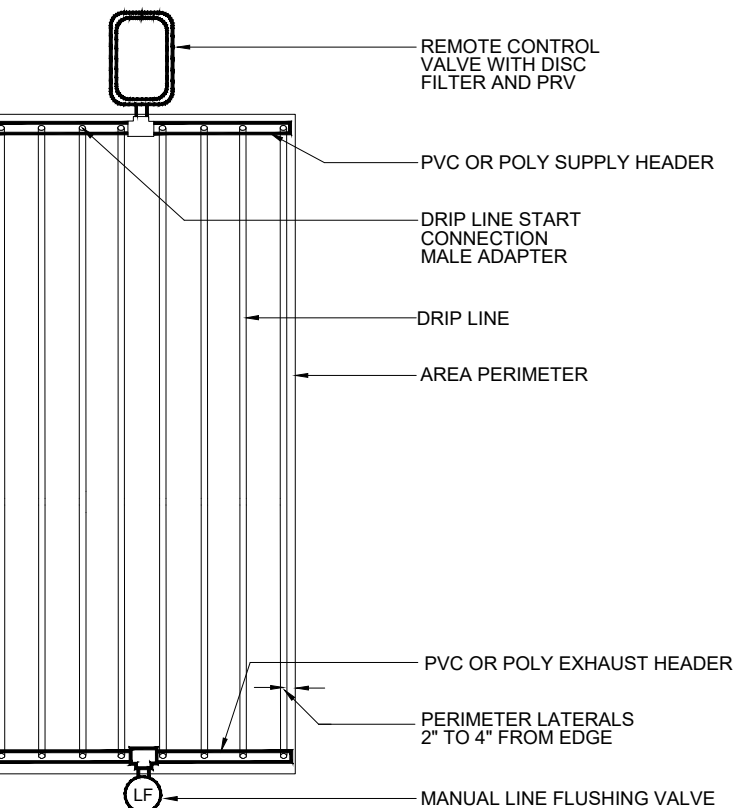
N.T.S.



USE DRIP TUBE FOR SUPPLY AND EXHAUST HEADERS ON GRIDS WITH FLOW SMALLER THAN 5 GPM ONLY.

DRIP ISLAND LAYOUT

N.T.S.

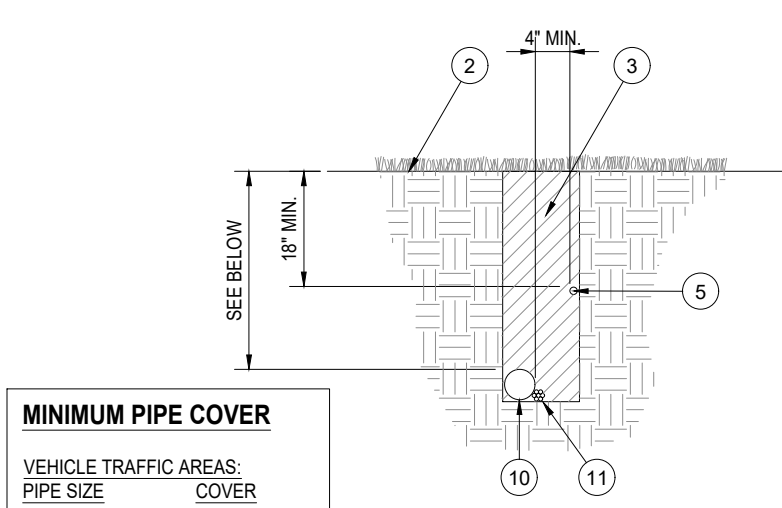


SUPPLY AND EXHAUST HEADERS SHALL BE CLASS 200 PVC PIPE, OF THE SAME DIAMETER AS THE ZONE VALVE SIZE.

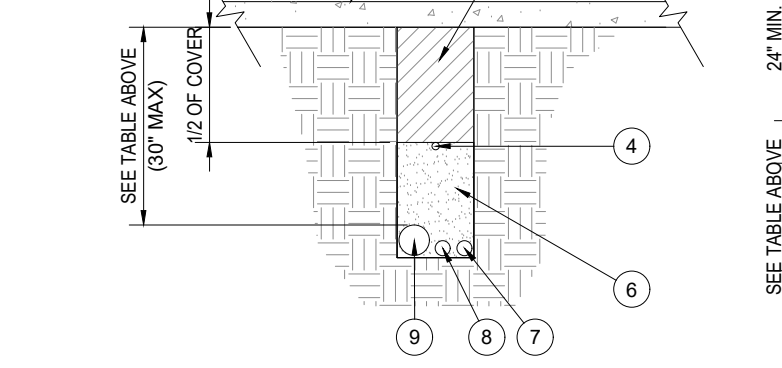
USE DRIP TUBE FOR SUPPLY AND EXHAUST HEADERS ON GRIDS WITH FLOW SMALLER THAN 5 GPM ONLY.

DRIP END FEED LAYOUT

N.T.S.

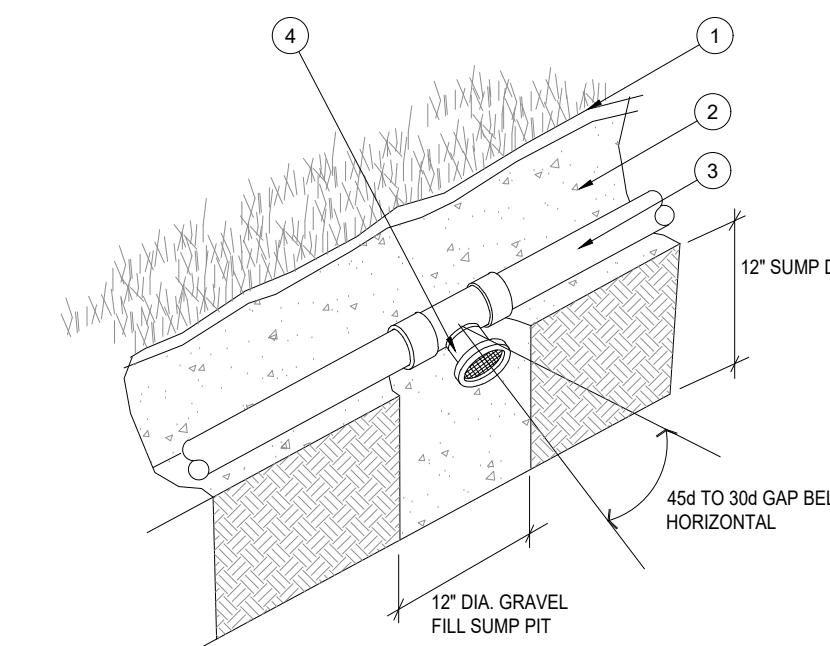


MINIMUM PIPE COVER	
VEHICLE TRAFFIC AREAS:	
PIPE SIZE	COVER
1/2" TO 2-1/2"	18" MIN.
3" TO 5"	24" MIN.
6" AND LARGER	30" MIN.
PEDESTRIAN TRAFFIC AREAS:	
PIPE SIZE	COVER
1/2" TO 1-1/2"	6" MIN.
2" TO 3"	12" MIN.
4" TO 6"	18" MIN.
6" AND LARGER	24" MIN.



SLEEVING

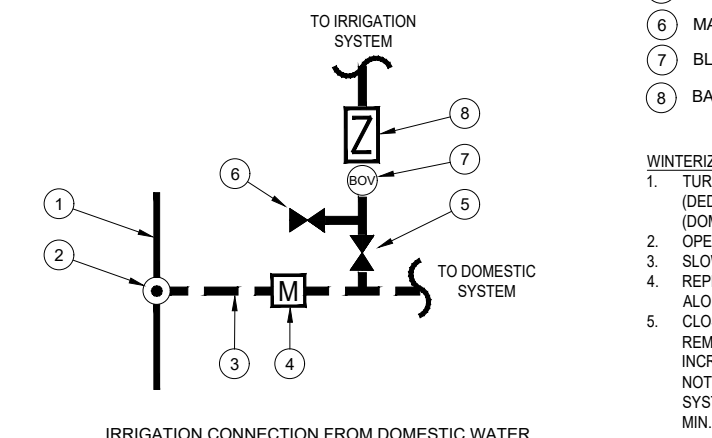
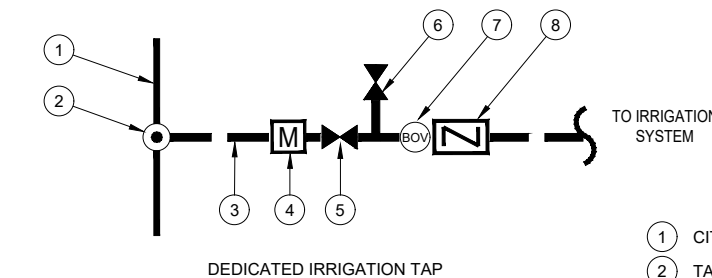
PIPE AND SLEEVE INSTALLATION



NOTE: AUTOMATIC VALVES ARE TO BE LOCATED AT LOW POINTS OF LATERAL LINES. LOCATE END DRAIN VALVE 12" UPSTREAM FROM LAST HEAD.

AUTOMATIC DRAIN VALVE

N.T.S.



WATER TAP DIAGRAM

N.T.S.